

Workshop furniture

It enables creation of a comfortable place for work and safe storage of tools.

- made of powder coated sheet-metal 0.8-1 mm thick
- solid, durable structure
- lockable door reinforced by a special profile
- for self-assembly

Hanging workshop cabinets

- 9 shelves
- perforated rear panel makes it possible to hang different types of hooks, handles, brackets and containers

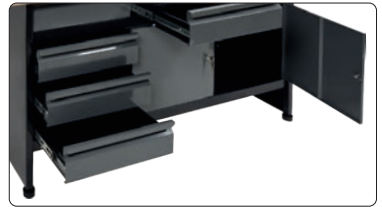
58440

- dimensions:
1125 x 265 x 630 mm



58441

- dimensions:
1580 x 265 x 630 mm



Workshop desk 58450



- shelf
- desk-top made of plywood with dimensions of 1160 x 600 x 20 mm
- dimensions: 1160 x 600 x 830 mm

Workshop table 58455



- shelf
- table-top made of plywood with dimensions of 1160 x 600 x 20 mm
- 5 drawers with ball guides with load strength of up to 15 kg
- dimensions: 1160 x 600 x 840 mm

Workshop table 58456

- 2 shelves
- table-top made of plywood with dimensions of 1700 x 600 x 20 mm
- 6 drawers with ball guides with load strength of up to 15 kg
- dimensions: 1700 x 600 x 840 mm

