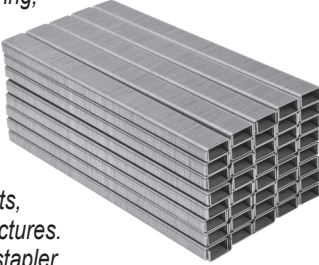


Connecting elements

Use for connecting materials with application of appropriate pneumatic tools.
Improve the efficiency of finishing and installation works.

Staples

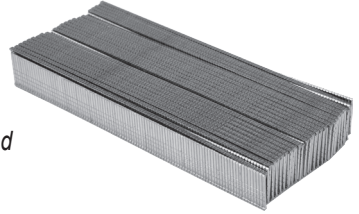
Used in upholstery, carpentry and finishing works. Intended for connecting materials, including upholstery soffits, with wooden structures. Require using a stapler.



VOREL	(mm)	(pcs)
71970	6 x 12,7	12 000
71971	10 x 12,7	7 500
71972	16 x 12,7	4 500
71975	16 x 5,5	2 000
71976	21 x 5,5	2 200
71977	25 x 5,5	2 000
71978	38 x 5,5	1 600

Pins

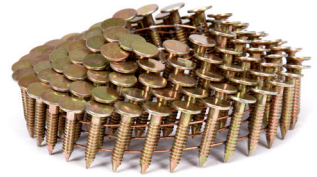
Used in upholstery, carpentry and finishing works. Intended for connecting materials with wooden structures and connecting upholstery materials. Require using a pin nailer.



VOREL	(mm)	(pcs)
71980	16	5 000
71981	30	5 000
71982	35	5 000
71983	50	3 400

Magazine roofing nails bound with wire

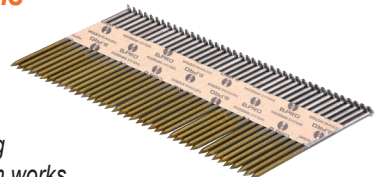
Used in roofing, e.g. for fixing felt, shingles and meshes. Require using a drum nail gun.



VOREL	(mm)	(pcs)
72000	3,1 x 19	4 200
72001	3,1 x 22	4 200

Strip nails bound with paper

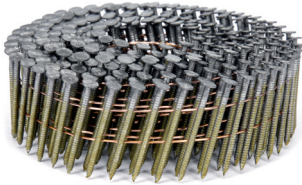
Used during construction works. Require using a pneumatic nail gun.



VOREL	(mm)	(pcs)
72010	2,8 x 50	3 000
72011	2,8 x 65	3 000
72012	2,8 x 75	3 000
72013	3,1 x 90	2 000

Magazine nails bound with wire

Used in roofing and building ating membranes or for connecting wooden elements. Require using a drum nail gun.



VOREL	(mm)	(pcs)
71990	2,1 x 32	7 200
71991	2,1 x 38	7 200
71992	2,1 x 50	5 400
71993	2,5 x 64	3 000
71994	2,5 x 70	3 000
71995	2,5 x 75	3 000
71996	2,8 x 80	3 000
71997	2,8 x 90	3 000