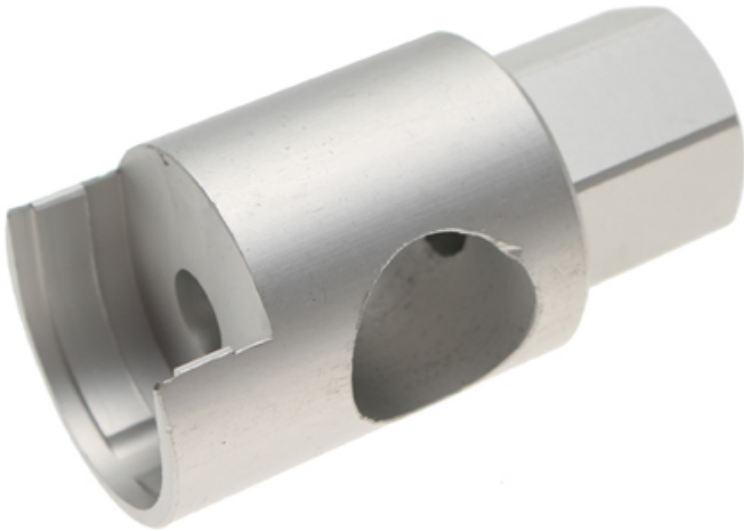


## Spark Plug Puller for BMW Motorcycles (Art. 8939)

**PRO+**

- for pulling the spark plugs plug and loosening the 22 mm internal hexagon front axle (Note: additional sliding bar required, not suitable for water-cooled R 1200 GS)
- sliding bar bore: 19 mm
- material: aluminum

Technical modifications reserved - we are not responsible for issues while printing